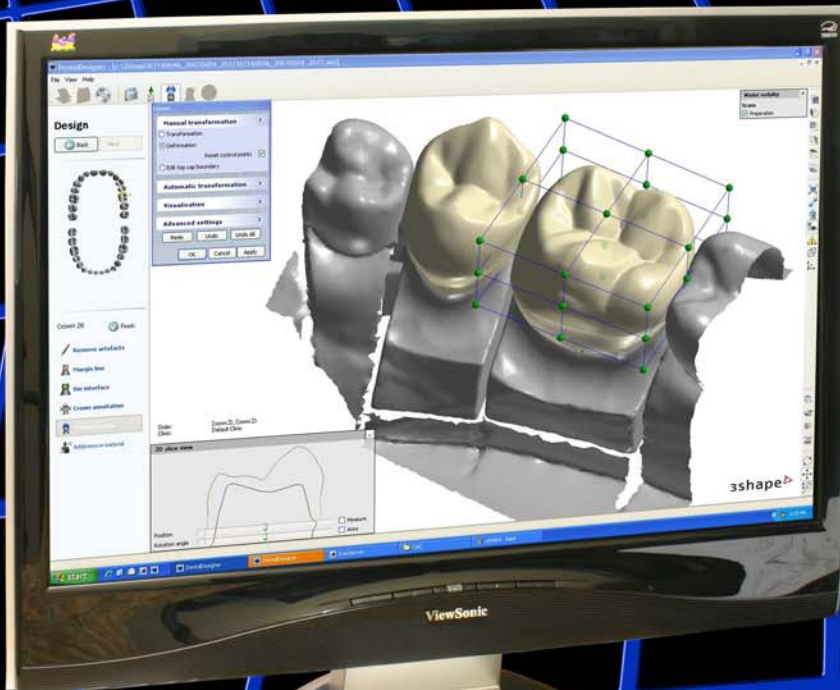
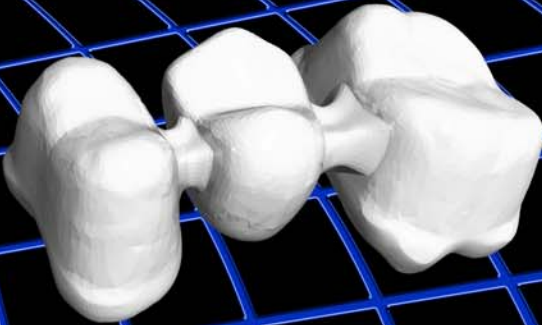




DIGITAL DENTAL LAB

Open System CAD / CAM

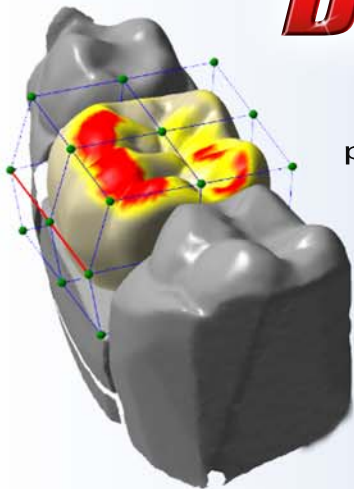
www.DigitalDentalLab.com email: info@DigitalDentalLab.com Tele: (949) 395-3613





Scan

Impressions are optically scanned resulting in dimensionally accurate 3-D computer models.



Design

Dental specific CAD programs are used to digitally design crowns, copings, bridges, etc. while following user defined parameters.

Produce

CAD output is used to drive the Dental Mill. Parts can be machined in zirconia, titanium, alumina, plastics, metals, wax, etc.



Machine Specifications

X Axis Travel	203mm / 8.0"
Y Axis Travel	101mm / 4.0"
Z Axis Travel	101mm / 4.0"
B Axis Travel	360 Degrees
Spindle Speed	0 - 40,000 rpm
Resolution	.001mm / .00005"
Accuracy	.005mm / .0002"
Repeatability	.0025mm / .0001"
Machine Weight	170 kg / 300 lbs
Machine Dimensions	610mm x 813mm x 1016mm 24" x 32" x 40"
Automatic Tool Changer	10 tools



Wax Copings

6 min. average machining
Material cost 50 cents



Zirconia Copings

10 min. average machining
Material cost \$10-\$15



Acrylic Temporaries

15 min. average machining
Material cost \$2



Zirconia Bridges

10 min. average machining
(per unit)
Material cost \$10-\$15 (per unit)